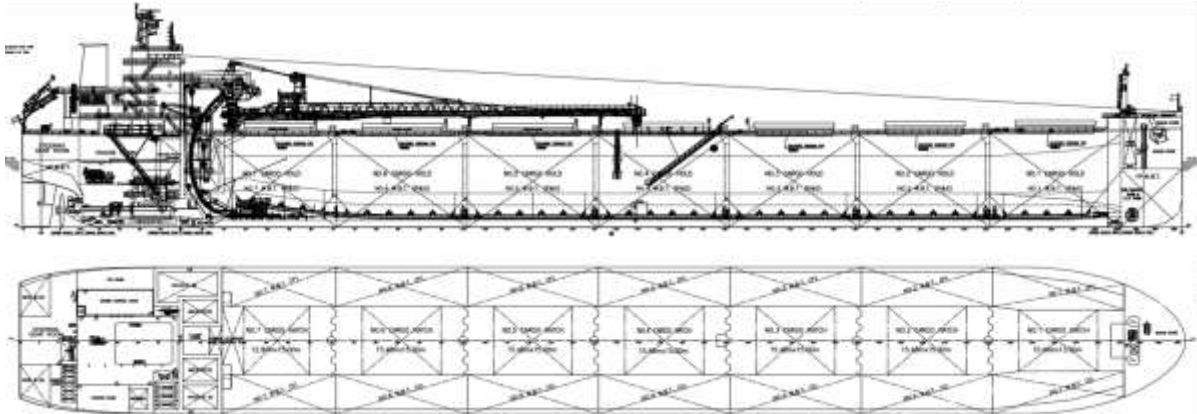




# Algoma Celebration



Manager: Algoma Shipping Ltd.  
 Registry: Nassau / Bahamas  
 Builder: JiangSu Yangzi-Mitsui Shipbuilding Co.,Ltd  
 Type: Self Unloading Bulk Carrier  
 Class: ABS. +A1, Bulk Carrier, BC-B, SH, SHCM, ESP, CPS, ©, ✕AMS, ✕ACCU, BWT, BWE, IHM, NOxTier III, EEDI-Ph3, TCM, UWILD, Methanol Fuel Ready Level 3 (S), Level 2D (TA,ME), RW, RRDA

## Principal Particulars

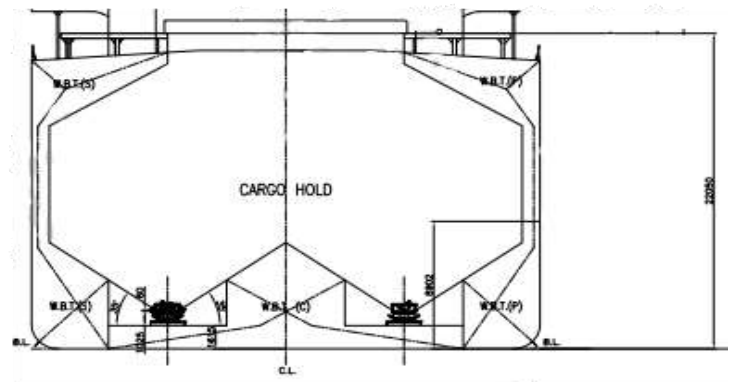
	Metres	Feet
LOA	229.000 m	751'-04"
LBP	225.300 m	739'-02"
Beam (mld)	32.260 m	105'-10"
Depth (mld)	20.150 m	66'-01"

## Tonnage

	International (MT)
Gross	44,640
Net	20,190

## Load Lines

	Metres	Feet
Tropical (FW)	15.030	49'-04"
Summer (FW)	14.730	48'-04"
Tropical (SW)	14.700	48'-03"
Summer (SW)	14.418	47'-04"
Winter (SW)	14.100	46'-03"



## Self Unloading Equipment

Two belt gravity system, with single C-Loop. 80.0m discharge boom luffing 18° and slewing 95° P&S. Intermediate discharge chute located ~48m aft of head discharge chute. Designed discharge rate of up to 5,000 metric tonnes/hour.

## Cargo Deadweight

(610 MT consumables assumed)	International (MT)
Summer (SW)	79,014

Note: Deadweight shown excludes Crew & Effects, Fuel Oil, Lube Oil, Water & Stores (~610 MT).

## Midship Air Draft

(To Top of Hatch Coaming at Side)	Metres	Feet
Summer (SW)	7.632	25'-00"
Ballast (SW)	13.791	45'-03"

## Hold Capacities (100% Filled)

	m <sup>3</sup>	ft <sup>3</sup>
Hold 1	9,815	346,617
Hold 2	11,250	397,297
Hold 3	11,187	395,069
Hold 4	11,142	393,469
Hold 5	11,137	393,300
Hold 6	11,059	390,556
Hold 7	7,895	278,799

## Hatches

Number: 7  
 15.48m (12.90m) x 15.00m (13.50m)  
 Type: Side Rolling

	Metres	Feet
Bow to mid Hatch #1	24.99	82'-00"
Fwd to Aft	153.51	503'-08"
Aftmost Hatch to Stern	50.40	165'-04"

Total, holds and hatches 73,485 2,595,108

63 Church Street Suite 600 St. Catharines, Ontario L2R  
 3C4 Tel: 905.988.2600 Fax: 905.988.1801  
[www.algonet.com](http://www.algonet.com)