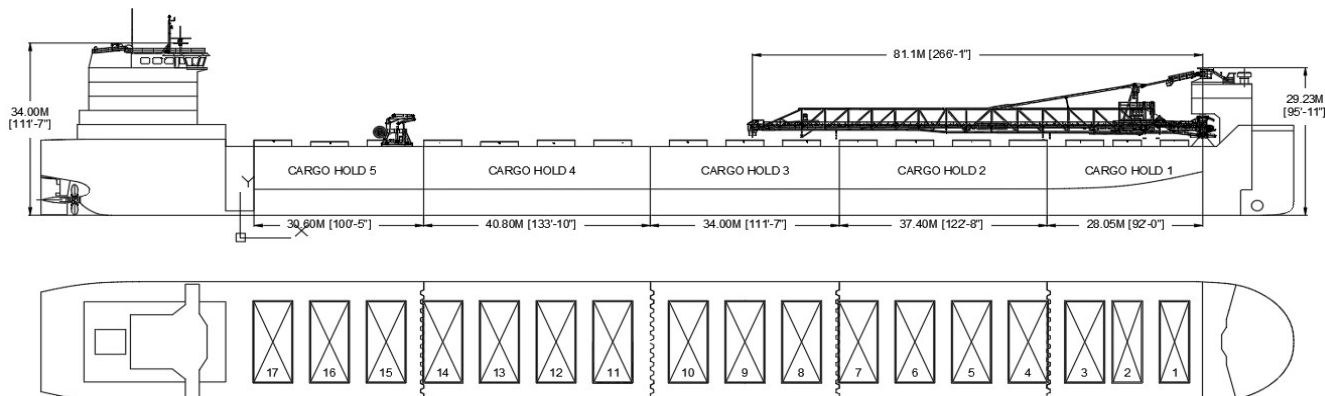




Algoma Endeavour



Manager: Algoma Central Corporation
Registry: Toronto / Canada
Builder: 3MAJ Rijeka
Type: Great Lakes Bulk Carrier
Class: Lloyds Register of Shipping
+100A1 Great Lakes Bulk Carrier, LI, +LMC, UMS, NAV1, CAC3

Principal Particulars

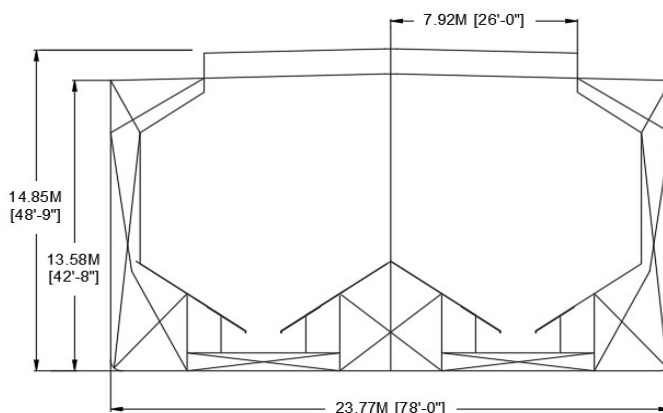
	Metres	Feet
LOA	225.550 m	740'-00"
LBP	222.485 m	729'-11"
Beam (mld)	23.770 m	78'-00"
Depth (mld)	13.580 m	44'-07"

Tonnage

	International (MT)
Gross	22,867
Net	9,191

Great Lakes Load Lines

	Metres	Feet - Inch
MS (FW)	9.659	31'-8"
S (FW)	9.424	30'-11"
INT (FW)	9.317	30'-7"
W (FW)	9.209	30'-5"
MS (SW)	9.446	31'-0"
S (SW)	9.211	30'-2"
INT (SW)	9.104	29'-10"
W (SW)	8.996	29'-6"



Self Unloading Equipment

Two belt gravity system, with single C-Loop & forward-mounted 81.1m boom, which luffs 18° and slews 105° P&S. Feeder gates, UHMW-PE linings in holds, with vibrators fitted throughout. Designed discharge rate of up to 5,450 metric tonnes/hour.

Cargo Deadweight

	International (MT)
(610 MT consumables assumed)	
@ 31'-8" Mid Summer	36,323
@ 26'- 6" Seaway Draft	28,599

Note: Deadweight shown excludes Crew & Effects, Fuel Oil, Lube Oil, Water & Stores (~610 MT).

Midship Air Draft

(To Top of Hatch Coaming at Side)

	Metres	Feet - Inch
Summer (FW)	5.426	17'-10"
Seaway (FW)	6.773	22'-3"
Ballast (FW)	9.489	31'-2"

Hold Capacities (100% Filled)

	m ³	ft ³
Hold 1	5,199	183,602
Hold 2	8,433	297,792
Hold 3	7,377	260,507
Hold 4	9,125	322,237
Hold 5	6,638	234,416
Total, holds and hatches	36,771	1,298,554

Hatches

Number:	17
Type:	6.76m (5.06m) x 15.84m Single plate

	Metres	Feet - Inch
Bow to mid Hatch #1	21.54	70'-8"
Fwd to Aft	162.97	534'-8"
Aftmost Hatch to Stern	41.90	137'-6"

63 Church Street Suite 600 St. Catharines, Ontario L2R
3C4 Tel: 905.988.2600 Fax: 905.988.1801
www.algonet.com