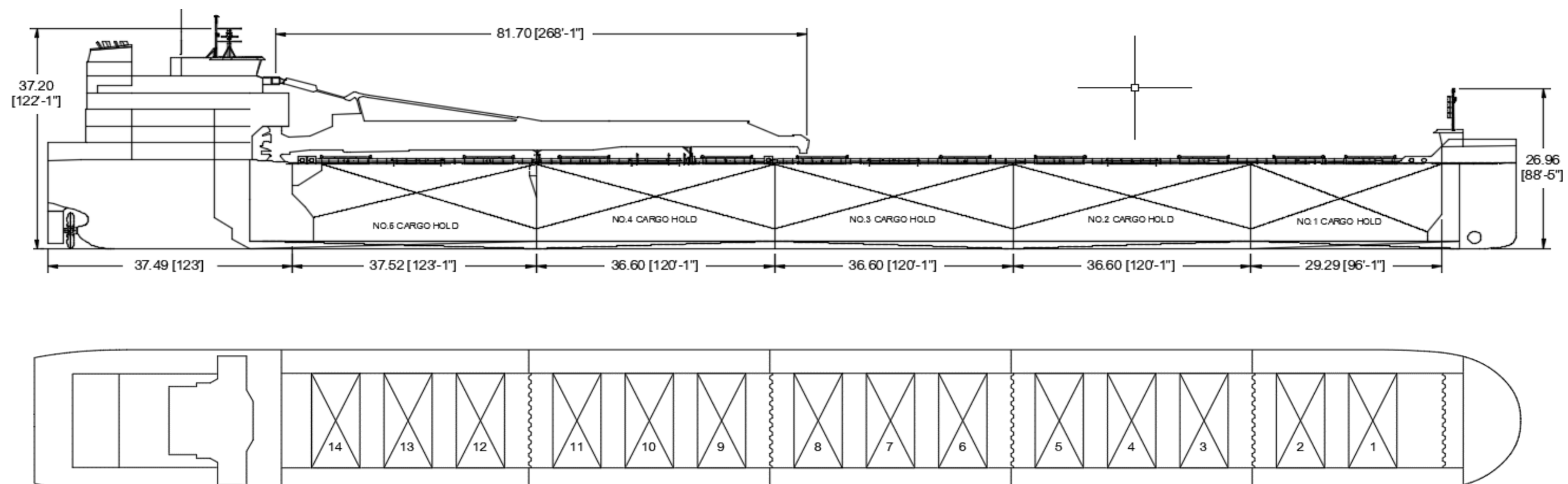




Algoma Bear



Manager: Algoma Central Corporation
 Registry: Toronto / Canada
 Builder: Jiangsu Yangzi-Mitsui Shipbuilding Co. LTD.
 Type: Great Lakes Self-Unloading Bulk Carrier
 Class: Lloyds Register of Shipping
 ✕100A1 Great Lakes & River St Lawrence

Principal Particulars

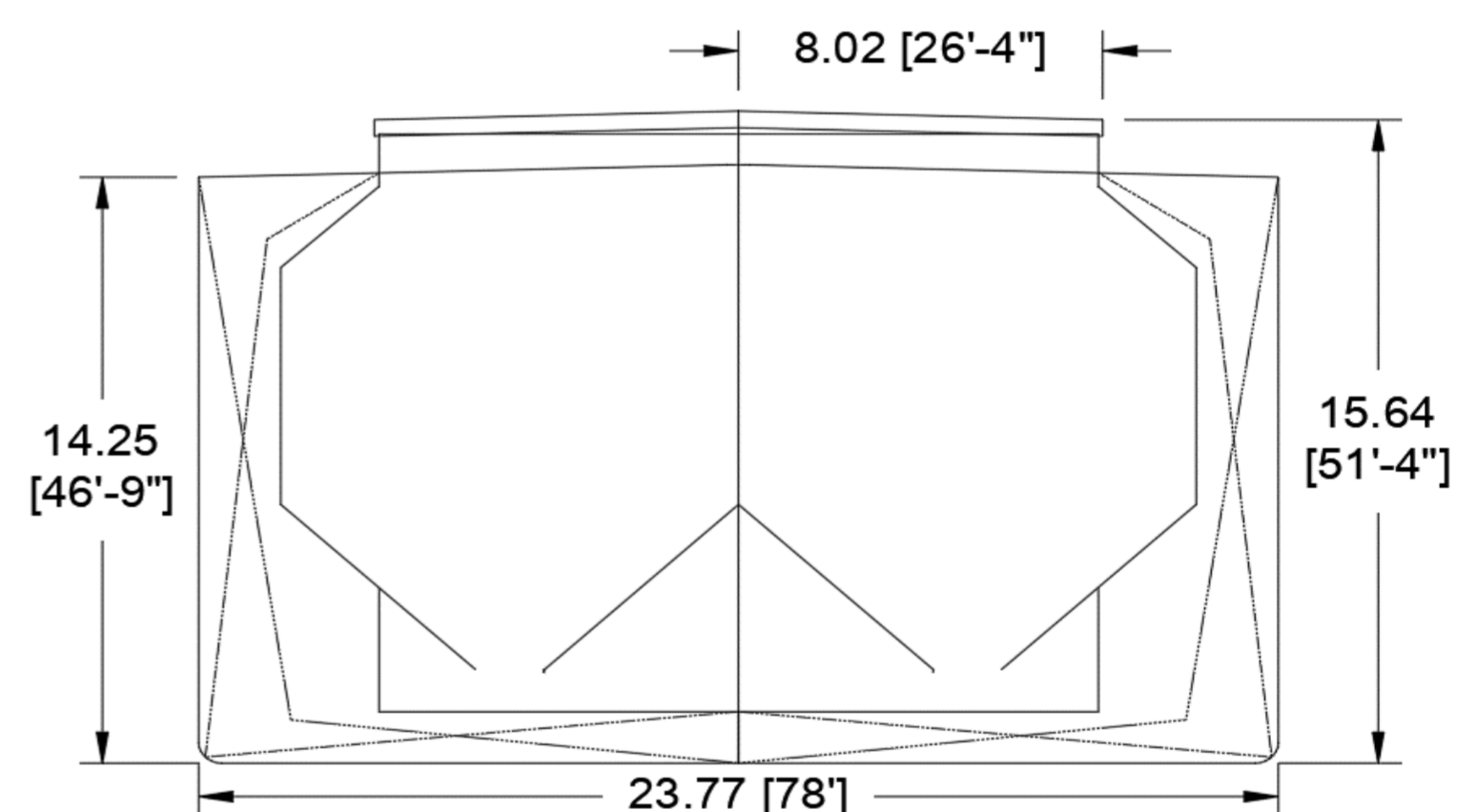
	Metres	Feet
LOA	225.54 m	740'-0"
LBP	223.925	734'-8"
Beam (mld)	23.770 m	78'-0"
Depth (mld)	14.250 m	46'-9"

Tonnage

	International
Gross	24116
Net	7497

Great Lakes Load Lines

	Metres	Feet
MS (FW)	9.241	30' - 3.8"
S (FW)	9.016	29' - 6.9"
INT (FW)	8.914	29' - 2.9"
W (FW)	8.812	28' - 10.9"
MS (SW)	9.033	29' - 7.6"
S (SW)	8.808	28' - 10.8"
INT (SW)	8.706	28' - 6.7"
W (SW)	8.604	28' - 2.7"



Self Unloading Equipment

Two belt gravity system with loop belt elevator. 81.70 m discharge boom luffing to 18° and slewing to 90° P&S. Shear type basket gates, UHMW plastic linings in holds and vibrators throughout tunnels. Designed discharge rate of up to 5,450 metric tons/hour.

Cargo Deadweight

(610 MT consumables assumed)	Metric	Long
@ Mid Summer	35,840	35,275
@ 26'- 6" (FW) Seaway Draft	29,749	29,281

Note: Deadweight shown excludes Crew & Effects, Fuel Oil, Lube Oil, Water & Stores (~610 MT).

Midship Air Draft

(To Top of Hatch Coaming at Side)	Metres	Feet
Summer (FW) (9.016 m)	6.110	20' - 1"
Seaway (FW) (8.077 m)	7.048	23' - 2"
Ballast (FW) (5.752 m)	9.373	30' - 9"

Hold Capacities (Self-Trim 30°)

	m ³	ft ³
Hold 1	6,026	212,803
Hold 2	7,680	271,224
Hold 3	7,706	272,124
Hold 4	7,706	272,124
Hold 5	7,006	247,418
Total, holds and hatches	36,124	1,275,693

Hatches

Number:	14
Type:	Single plate
	Metres Feet
Bow to mid Hatch #1	22.44 73' - 8"
Fwd to Aft Hatch	157.38 516' - 4"
Mid Hatch #14 to Stern	45.72 150' - 0"

63 Church Street Suite 600 St. Catharines, Ontario L2R 3C4
 Tel: 905.687.7888 Fax: 905.687.7840
www.algonet.com