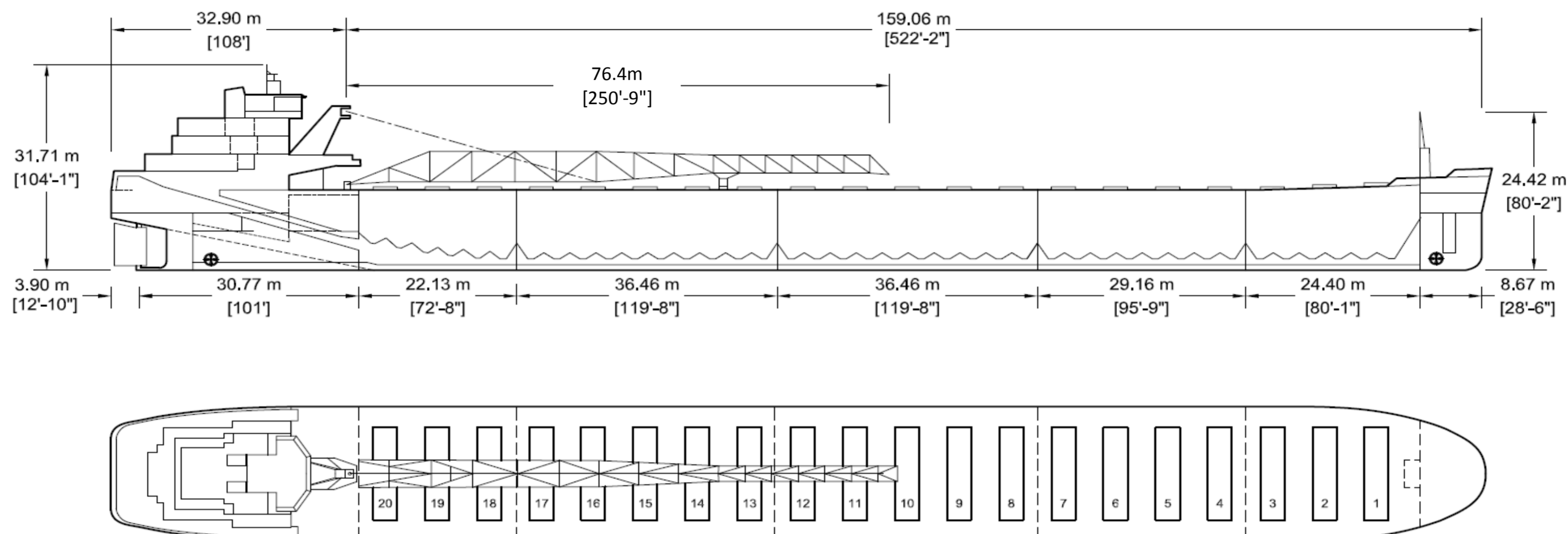




# Algoma Buffalo



Manager: Algoma Central Corporation  
 Registry: St Catharines / Canada  
 Builder: Bay Shipbuilding Co., USA, 1978, Hull 721  
 Type: Great Lakes Self-Unloading Bulk Carrier  
 Class: American Bureau of Shipping  
 ✕A1, Great Lakes & River St Lawrence, ✕AMS, ✕ACC, ©

## Principal Particulars

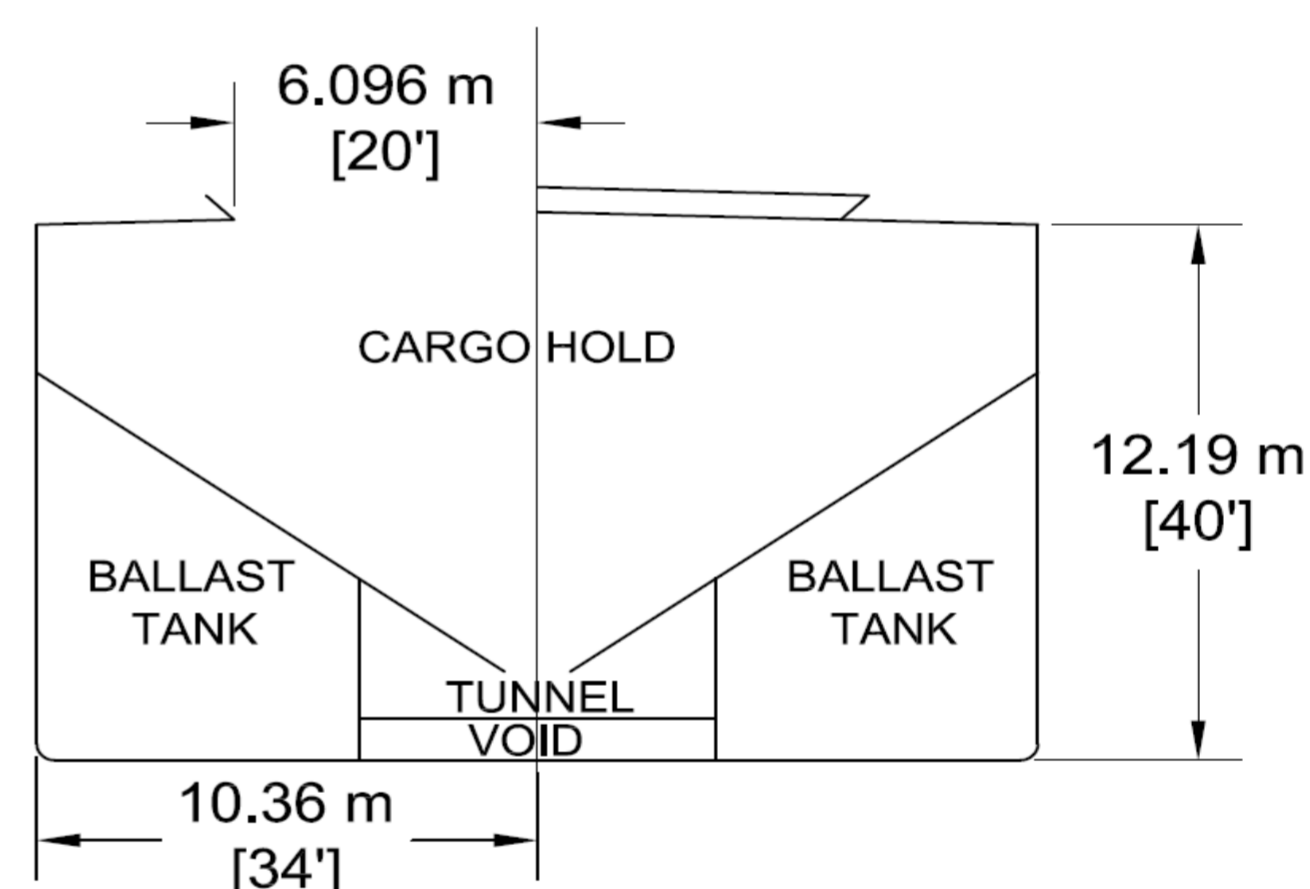
	Metres	Feet
LOA	193.515	634'-10 <sup>5</sup> / <sub>8</sub> "
LBP	188.064	617'-0"
Beam (mld)	20.726	68'-0"
Depth (mld)	12.192	40'-0"

## Tonnage

	International
Gross	11619
Net	8036

## Great Lakes Load Lines

	Metres	Feet
MS (FW)	8.509	27'- 11"
S (FW)	8.300	27'- 2 <sup>3</sup> / <sub>4</sub> "
INT (FW)	8.185	26'- 10 <sup>1</sup> / <sub>4</sub> "
W (FW)	8.077	26'- 6"
MS (SW)	8.325	27'- 2 <sup>1</sup> / <sub>4</sub> "
S (SW)	8.115	26'- 7 <sup>1</sup> / <sub>2</sub> "
INT (SW)	8.001	26'- 3"
W (SW)	7.893	25'- 10 <sup>3</sup> / <sub>4</sub> "



## Self Unloading Equipment

Single belt gravity system with incline belt elevator. 76.4m discharge boom luffing to 15° and slewing to 105° P&S. Shear type basket gates and vibrators throughout tunnels. Designed discharge rate of up to 5900 metric tons/hour.

## Cargo Deadweight

	Metric	Long
@ Mid Summer	24,597	24,210
@ 26'- 6" (FW) Seaway Draft	22,863	22,580

Note: Deadweight shown excludes Crew & Effects, Fuel Oil, Lube Oil, Water & Stores (~610 MT).

## Midship Air Draft

(To Top of Hatch Coaming at Side)

	Metres	Feet
Summer (FW) (8.300 m)	4.661	15'- 3 <sup>1</sup> / <sub>2</sub> "
Seaway (FW) (8.077 m)	4.883	16'- 0 <sup>1</sup> / <sub>4</sub> "
Ballast (FW) (5.563 m)	7.398	24'- 3 <sup>1</sup> / <sub>4</sub> "

## Hold Capacities (Self-Trim 35°)

	m <sup>3</sup>	ft <sup>3</sup>
Hold 1	3,495	123,420
Hold 2	4,261	150,484
Hold 3	5,330	188,235
Hold 4	5,330	188,235
Hold 5	2,671	94,338
Total (Hold Only)	21,087	744,712

## Hatches

Number:	20	
Type:	Single plate	
	Metres	Feet
Bow to mid Hatch #1	15.93	52'- 3"
Fwd to Aft	138.99	456'- 0"
Mid Hatch #20 to Stern	38.56	126'- 6"

63 Church Street Suite 600 St. Catharines, Ontario L2R  
 3C4 Tel: 905.988.2600 Fax: 905.988.1801  
[www.algonet.com](http://www.algonet.com)