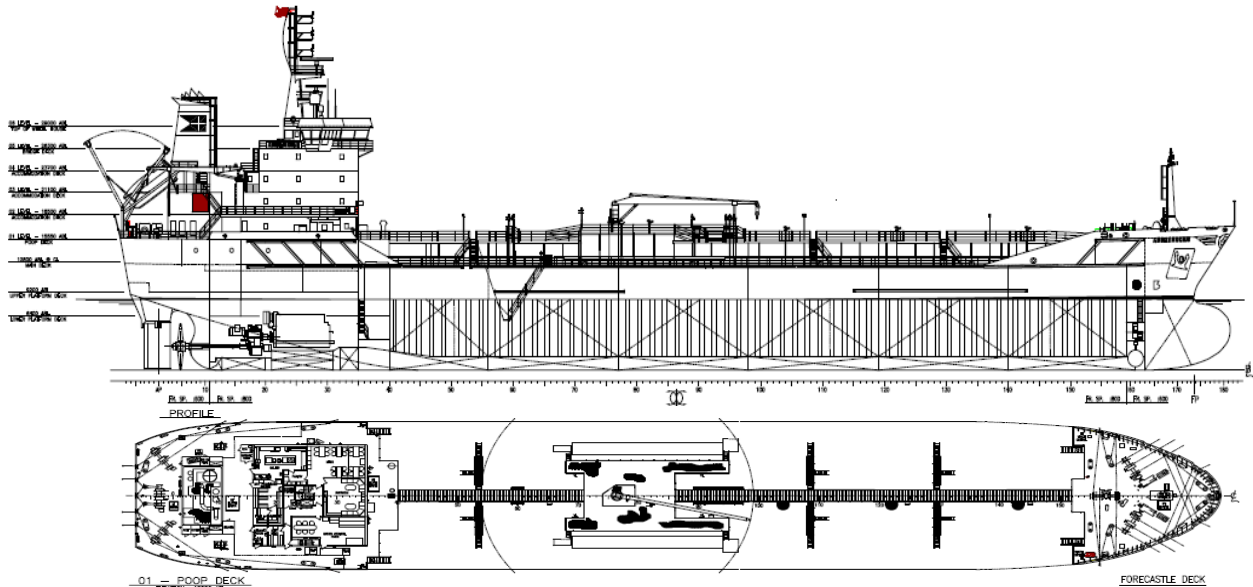
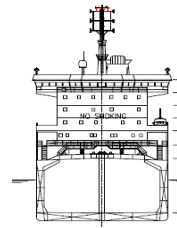




Algoma Hansa



Manager: Algoma Tankers Limited
Registry: St Catharines / Canada
Builder: Alabama Shipyard 1998
Type: IMO II Double Hull Oil & Chemical Tanker
Class: Lloyds Register of Shipping
 ✕100A1, SG 1.54, Ice Class 1C, ESP, LI, ✕LMC, UMS, NAV1, SCM
IMO Number: 9127186



Principal Particulars

	Metres	Feet
LOA	144.05	472'-07"
LBP	134.00	439'-07"
Beam (mld)	23.30	76'-05"
Depth (mld)	12.40	40'-08"
Keel to Mast	39.97	131'-01"

Tonnage

Gross	11,290
Net	4,891

Cargo Pumps

12 FRAMO Cargo Pumps At 300 m3/hr each

Cargo Deadweight

Summer (SW)	16,775
Winter (SW)	16,267

Tank Capacities (at 98%)

Tank No. 1 P&S	2,123	13351
Tank No. 2 P&S	3,371	21206
Tank No. 3 P&S	3,524	22163
Tank No. 4 P&S	3,521	22149
Tank No. 5 P&S	3,515	22,107
Tank No. 6 P&S	2,483	15,616
7S Slop Tank	223	1,403
7P Slop Tank	223	1,400
Total (ex slop tanks)	18,537	116,593

Assigned Drafts

	Metres	Feet
Summer (FW)	8.894	29'-02"
Summer (SW)	8.700	28'-07"
Winter (FW)	8.713	28'-07"
Winter (SW)	8.519	27'-11"
FWA	0.194	

Air Draft

	Metres	Feet
Summer (SW)	31.270	102'-07"
Ballast (SW) (6.5 m)	33.470	109'-10"

Service Speed

13 knots

Tank Coatings

Epoxy Phenolic Coated

Main Engine Type

Wartsila 6L46A

Propeller

One Controllable Pitch

Bow Thruster

588 kW

Alternative Propulsion Device (APD)

900 kW

63 Church Street, Suite 600 St. Catharines, Ontario L2R
 3C4 Tel: 905.687.7888 Fax: 905.687.7840
www.algonet.com