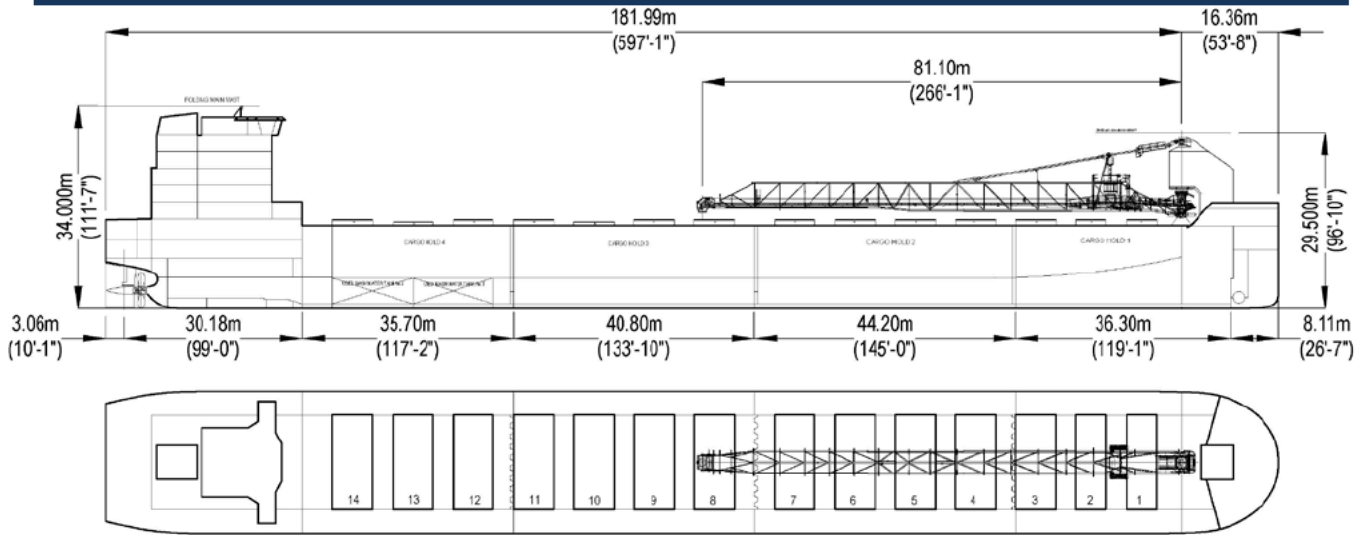
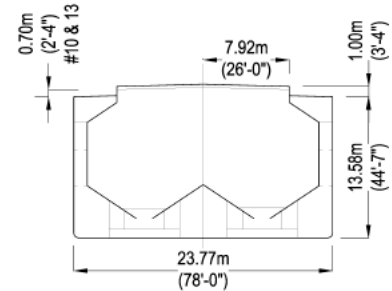




Algoma Innovator



Manager: Algoma Central Corporation
 Registry: St. Catharines / Canada
 Builder: 3MAJ Uljanik Group, 2017 (Hull 732)
 Type: Great Lakes Bulk Carrier
 Class: Lloyds Register of Shipping
 ✱100A1 Great Lakes & River St Lawrence



Principal Particulars

LOA	198.35 m	650'-09"
LBP	195.29 m	640'-08"
Beam (mld)	23.770 m	78'-00"
Depth (mld)	13.580 m	44'-07"

International (1969) Tonnage

GT	about	19851
NT	about	7745

Assigned Drafts (FW)

	Metres	Feet-Inch
Midsummer	9.74	31'-11"
Summer	9.50	31'- 2"
Intermediate	9.38	30'- 9"
Winter	9.25	30'- 4"
Reduction for SW	0.21	8"

Self Unloading Equipment

Two belt gravity system, with single C-Loop and forward-mounted 81.1m boom, which luffs to 18° and slews to 105° P&S. Feeder gates, UHMW-PE linings in holds, with vibrators fitted throughout. Maximum unloading rate is 5,450 t/hr or 3,750 m³/hr: 5,450 t/hr (stone) or 4,500 t/hr (salt).

Cargo Deadweight (FW)

(610 MT consumables assumed)	Metric	Long
@ 31'-11" Mid Summer	31,600	31,100
@ 26'- 6" Seaway Draft	24,100	23,697

Note: Deadweight shown excludes Crew & Effects, Fuel Oil, Lube Oil, Water & Stores (~610 MT).

Midship Air Draft

(To Top of Hatch Coaming at Side)

	Metres	Feet-Inch
Summer (FW)	5.1	16'- 8" *
Seaway (FW) (8.077 m)	6.52	21'- 5" *
Ballast (FW)	8.67	28'- 5" **

* less 0.30m IWO 10 & 13
**TWO 13 in Operating Ballast

Hold Capacities (Self-Trim 35°)

	m³	ft³
Hold 1	5,200	183,600
Hold 2	9,400	332,000
Hold 3	8,900	314,300
Hold 4	6,500	229,500
Total, holds and hatches	30,000	1,059,400

Hatches

Number: 14
Type: 6.8m (5.1m) x 15.84m Single plate

	Metres	Feet-Inch
Bow to mid Hatch #1	23.16	76'- 0"
Fwd to Aft	133.45	437'-10"
Aftmost Hatch to Stern	41.75	137'- 0"

63 Church St Suite 600 St. Catharines, Ontario L2R 3C4
 Tel: 905.687.7888 Fax: 905.988.1801
www.algonet.com