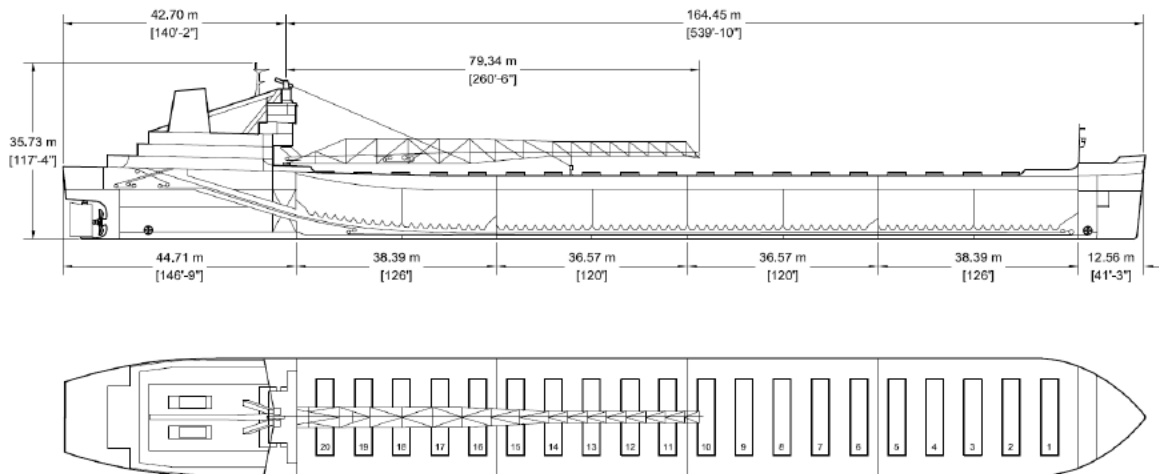




# Algoma Compass



**Manager:** Algoma Central Corporation  
**Registry:** St Catharines / Canada  
**Builder:** American Shipbuilding Co., USA, 1973, Hull 200  
**Type:** Great Lakes Self-Unloading Bulk Carrier  
**Class:** American Bureau of Shipping  
 \*A1, Great Lakes & River St Lawrence, \*AMS, \*ACC, ©

## Principal Particulars

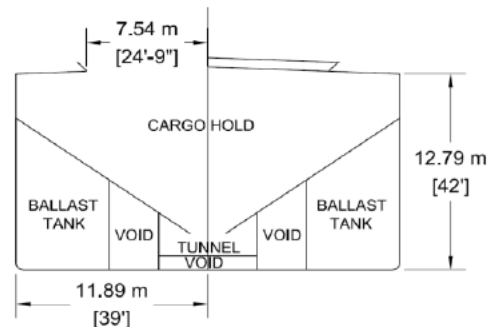
	Metres	Feet
LOA	207.264	680'-0"
LBP	202.539	664'-6"
Beam (mld)	23.774	78'-0"
Depth (mld)	12.802	42'-0"

## Tonnage

	US Tonnage
Gross	15674
Net	12482

## Great Lakes Load Lines

	Metres	Feet
MS (FW)	8.705	28'-6¾"
S (FW)	8.498	27'-10½"
INT (FW)	8.498	27'-10½"
W (FW)	8.498	27'-10½"



## Self Unloading Equipment

Single belt gravity system with incline belt elevator. 80 m discharge boom luffing to 18° and slewing to 90° P&S. Shear type basket gates, and vibrators throughout tunnels. Designed discharge rate of up to 5900 metric tons/hour.

## Cargo Deadweight

	Metric	Long
@ Mid Summer	29,593	29,127
@ 26'- 9" (FW) Seaway Draft	27,108	26,682

Note: Deadweight shown excludes Crew & Effects, Fuel Oil, Lube Oil, Water & Stores (~610 MT).

## Midship Air Draft

(To Top of Hatch Coaming at Side)

	Metres	Feet
Summer (FW) (8.498 m)	5.049	16'-6¾"
Seaway (FW) (8.150 m)	5.397	17'-8½"
Ballast (FW) (5.029 m)	8.518	27'-11¾"

## Hold Capacities

	m <sup>3</sup>	ft <sup>3</sup>
Hold 1	6,642	234,545
Hold 2	6,456	227,981
Hold 3	6,456	227,981
Hold 4	6,058	213,927
Total, holds and hatches	25,611	904,434

## Hatches

Number:	20	
Type:	Single plate	
	Metres	Feet
Bow to mid Hatch #1	18.29	60'-0"
Fwd to Aft	138.88	455'-7½"
Mid Hatch #20 to Stern	49.91	163'-9"