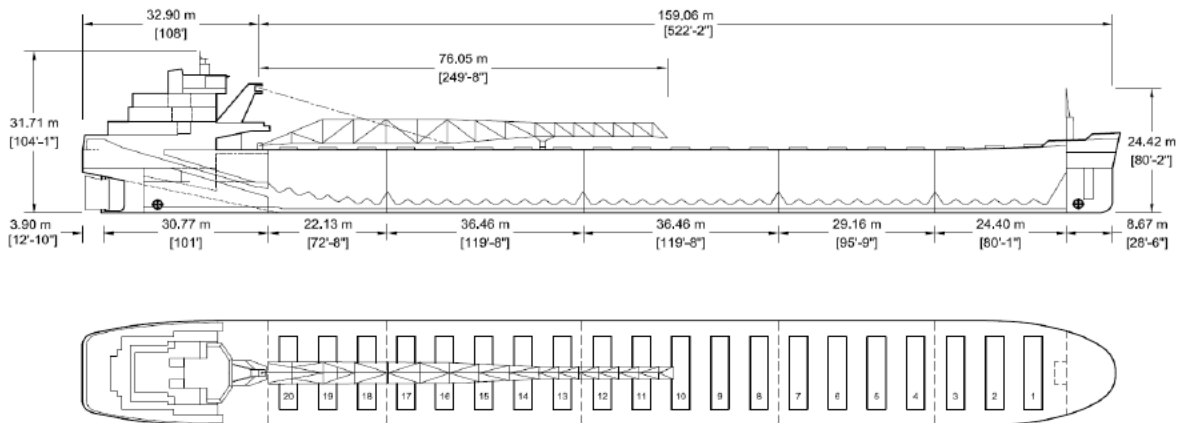




Algoma Buffalo



Manager: Algoma Central Corporation
 Registry: St Catharines / Canada
 Builder: Bay Shipbuilding Co., USA, 1978, Hull 721
 Type: Great Lakes Self-Unloading Bulk Carrier
 Class: American Bureau of Shipping
 *A1, Great Lakes & River St Lawrence, *AMS, *ACC, ©

Principal Particulars

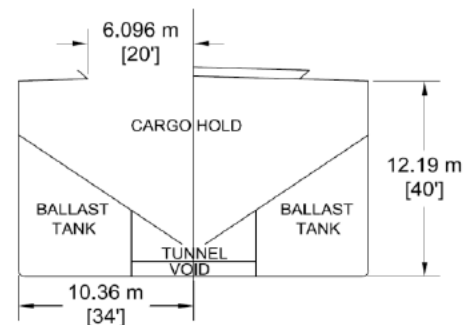
	Metres	Feet
LOA	193.515	634'-10 ⁵ / ₁₆ "
LBP	188.064	617'-0"
Beam (mld)	20.726	68'-0"
Depth (mld)	12.192	40'-0"

Tonnage

	US Tonnage
Gross	11619
Net	8036

Great Lakes Load Lines

	Metres	Feet
MS (FW)	8.509	27'- 11"
S (FW)	8.300	27'- 2 ³ / ₄ "
INT (FW)	8.185	26'- 10 ¹ / ₄ "
W (FW)	8.077	26'- 6"
MS (SW)	8.325	27'- 2 ¹ / ₄ "
S (SW)	8.115	26'- 7 ¹ / ₂ "
INT (SW)	8.001	26'- 3"
W (SW)	7.893	25'- 10 ³ / ₄ "



Self Unloading Equipment

Single belt gravity system with incline belt elevator. 76.2 m discharge boom luffing to 18° and slewing to 90° P&S. Shear type basket gates, and vibrators throughout tunnels. Designed discharge rate of up to 5900 metric tons/hour.

Cargo Deadweight

	Metric	Long
@ Mid Summer	24,597	24,210
@ 26'- 6" (FW) Seaway Draft	22,863	22,580

Note: Deadweight shown excludes Crew & Effects, Fuel Oil, Lube Oil, Water & Stores (~610 MT).

Midship Air Draft

(To Top of Hatch Coaming at Side)

	Metres	Feet
Summer (FW) (8.300 m)	4.661	15'- 3 ¹ / ₂ "
Seaway (FW) (8.077 m)	4.883	16'- 0 ¹ / ₄ "
Ballast (FW) (5.563 m)	7.398	24'- 3 ¹ / ₄ "

Hold Capacities

	m ³	ft ³
Hold 1	3,495	123,420
Hold 2	4,261	150,484
Hold 3	5,330	188,235
Hold 4	5,330	188,235
Hold 5	2,671	94,338
Total, holds only, hatch volume not included	21,088	744,712

Hatches

Number:	20	
Type:	Single plate	
	Metres	Feet
Bow to mid Hatch #1	15.93	52'- 3"
Fwd to Aft	138.99	456'- 0"
Mid Hatch #20 to Stern	38.56	126'- 6"