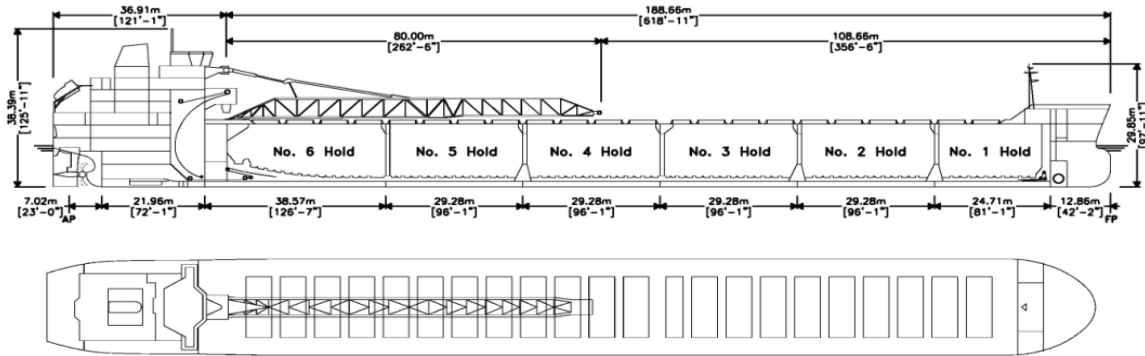




Algoma Mariner



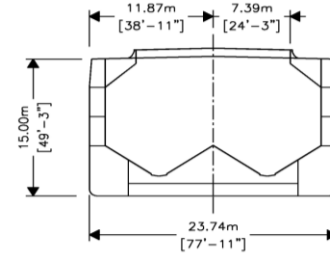
Manager: Algoma Central Corporation
 Registry: Port Colborne / Canada
 Builder: Chengxi Shipyard
 Type: Great Lakes Self Unloading Bulk Carrier
 Class: Lloyds Register of Shipping
 ✕100A1 Great Lakes & River St Lawrence & Coastal, ESP notation

Principal Particulars

	Metres	Feet
LOA	225.564 m	740'- 0"
LBP	219.516 m	720'- 2 ³ / ₈ "
Beam (mld)	23.74 m	77'-10 ⁵ / ₈ "
Depth (mld)	15.00 m	49'- 2 ¹ / ₂ "

Tonnage

	Cdn	US
Gross	24,535	
Net	9,504	



International Load Lines

	Metres	Feet
Tropical (SW)	10.381	34' - 0 ⁵ / ₈ "
Tropical (FW)	10.620	34' - 10 ¹ / ₈ "
S (SW)	10.170	33' - 4 ³ / ₈ "
S (FW)	10.409	34' - 1 ³ / ₄ "
W (SW)	9.950	32' - 7 ³ / ₄ "
W (FW)	10.189	33 - 5 ¹ / ₈ "

Great Lakes Load Lines

	Metres	Feet
MS (SW)	10.710	35.1'
MS (FW)	10.950	35.9'
S (SW)	10.440	34.2'
S (FW)	10.690	35.1'
INT (FW)	10.560	34.6'
INT (SW)	10.320	33.8'
W (SW)	10.190	33.4'
W (FW)	10.440	34.2'

Self Unloading Equipment

Two belt gravity system with loop belt elevator. 80.0 m discharge boom luffing to 18° and slewing to 95° P&S. Shear type basket gates, UHMW plastic linings in holds and vibrators throughout tunnels. Designed discharge rate of up to 5,440 metric tons/hour.

Cargo Deadweight

(610 MT consumables assumed)	Metric	Long
@ Mid Summer (SW - Grt Lks)	40,566	39,925
@ 10.17 m (FW - Intl.)	37,257	36,668
@ 26'- 6" (FW) Seaway Draft	26,870	26,445

Note: Deadweight shown excludes Crew & Effects, Fuel Oil, Lube Oil, Water & Stores (~610 MT).

Midship Air Draft

(To Top of Hatch Coaming at Side)	Metres	Feet
Summer (FW) (10.170 m)	5.888 m	19' - 3 ³ / ₄ "
Seaway (FW) (8.077m)	7.979 m	26' - 2 ¹ / ₈ "
Ballast (FW) (6.650 m)	9.406 m	30' - 10 ³ / ₈ "

Hold Capacities

	m ³	ft ³
Hold 1	4,807	169,757
Hold 2	6,742	238,091
Hold 3	6,668	235,478
Hold 4	6,742	238,091
Hold 5	6,742	238,091
Hold 6	7,587	267,932
Total, holds and hatches	39,288	1,387,440

Hatches

	Metres	Feet
Number:		22
Type:		Single plate
Bow to mid Hatch #1	26.67	87.50
Fwd to Aft	153.62	504.00
Mid Hatch #22 to Stern	45.26	148.50