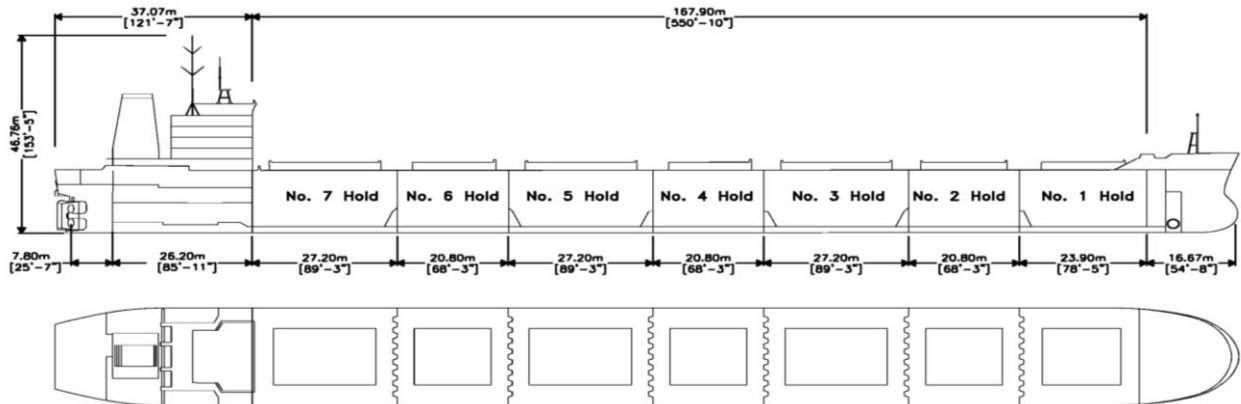




Algoma Guardian



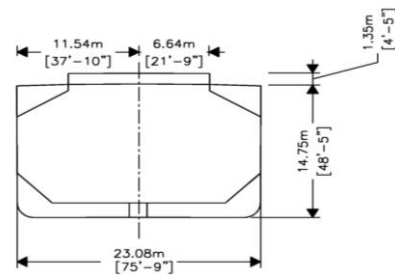
Manager: Algoma Central Corporation
 Registry: St. Catharines / Canada
 Builder: 3 Maj Brodogradiliste, Yugoslavia, 1987, Hull 643
 Type: Gearless Bulk Carrier
 Class: Lloyds Register of Shipping
 ✕100A1 Bulk Carrier, Ice Class C, ✕LMC, UMS

Principal Particulars

	Metres	Feet
LOA	222.20 m	728' - 11 ⁷ / ₈ "
LBP	216.50 m	710' - 3 ⁵ / ₈ "
Beam (mld)	23.08 m	75' - 8 ⁵ / ₈ "
Depth (mld)	14.75 m	48' - 4 ⁵ / ₈ "

Tonnage

	Cdn	US
Gross	23,306	
Net	11,667	



International Load Lines

	Metres	Feet
Tropical (SW)	10.088	33' - 1 ¹ / ₈ "
Tropical (FW)	10.316	33' - 10 ¹ / ₈ "
S (SW)	9.883	32' - 5 ¹ / ₈ "
S (FW)	10.111	33' - 2 ¹ / ₈ "
W (SW)	9.678	31' - 9"
W (FW)	9.906	32' - 6"

Great Lakes Load Lines

	Metres	Feet
MS (SW)	10.340	33.9'
MS (FW)	10.570	34.7'
S (SW)	10.080	33.1'
S (FW)	10.310	33.8'
INT (FW)	10.190	33.4'
INT (SW)	9.960	32.7'
W (SW)	9.840	32.2'
W (FW)	10.070	33.0'

Cargo Deadweight

(610 MT consumables assumed)	Metric	Long
@ Mid Summer (SW - Grt Lks)	37,911	37,312
@ Summer (SW - Intl)	34,932	34,380
@ 26'- 6" (FW) Seaway Draft	25,140	24,743

Note: Deadweight shown excludes Crew & Effects, Fuel Oil, Lube Oil, Water & Stores (~610 MT).

Midship Air Draft

(To Top of Hatch Coaming at Side)

	Metres	Feet
Summer (SW) (9.883 m)	6.267 m	20' - 6 ³ / ₄ "
Seaway (FW) (8.077m)	8.073 m	26' - 5 ⁷ / ₈ "
Ballast (FW) (6.000 m)	10.150 m	33' - 3 ⁵ / ₈ "

Hold Capacities

	m ³	ft ³
Hold 1	6,262	221,138
Hold 2	5,868	207,241
Hold 3	7,205	254,455
Hold 4	5,869	207,245
Hold 5	7,203	254,357
Hold 6	5,872	207,354
Hold 7	7,357	259,799
Total, holds and hatches	45,635	1,611,589

Hatches

Number:	Length	Width
7	47'-63'	43'

Type: McGreggor folding type

	Metres	Feet
Bow to mid Hatch #1	29.43	96.56
Fwd to Aft	142.14	466.34
Mid Hatch #47'-63' to Stern	50.62	166.09

63 Church Street Suite 600 St. Catharines, Ontario L2R
 3C4 Tel: 905.988.2600 Fax: 905.988.1801
www.algonet.com