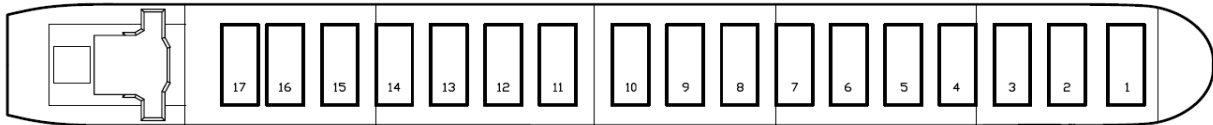
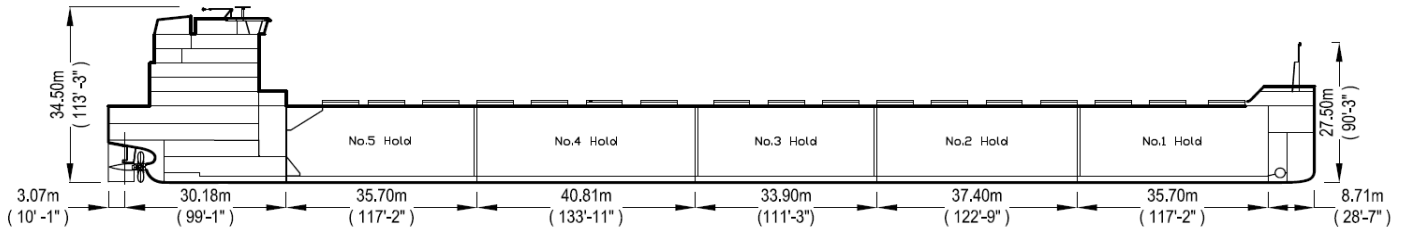




CWB Marquis



Manager: Algoma Central Corporation
 Registry: St. Catharines / Canada
 Builder: Nantong Mingde Heavy Industries
 Type: Great Lakes Bulk Carrier
 Class: Lloyds Register of Shipping
 ✱100A1 Great Lakes & River St Lawrence

Principal Particulars

	Metres	Feet
LOA	225.55 m	740'-0"
LBP	222.06 m	728'-6½"
Beam (mld)	23.770 m	78'-0"
Depth (mld)	14.700 m	48'-3"

Tonnage

	International
Gross	24284
Net	10621

Great Lakes Load Lines

	Metres	Feet
MS (FW)	9.769	32'- 0⅝"
S (FW)	9.514	31'- 2½"
INT (FW)	9.398	30'- 10"
W (FW)	9.281	30'- 5⅜"
MS (SW)	9.537	31'- 3½"
S (SW)	9.282	30'- 5⅜"
INT (SW)	9.166	30'- 0¾"
W (SW)	9.049	29'- 8¼"

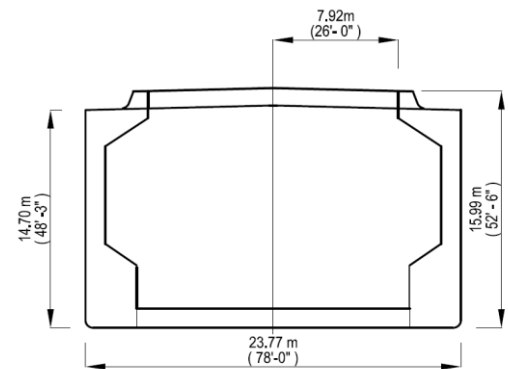
Cargo Deadweight

	Metric	Long
(610 MT consumables assumed)		
@ Mid Summer	38,450	37,844
@ 26'- 6" (FW) Seaway Draft	29,650	29,183

Note: Deadweight shown excludes Crew & Effects, Fuel Oil, Lube Oil, Water & Stores (~610 MT).

Hold Capacities (NET)

	m ³	ft ³
Hold 1	9,277	327,614
Hold 2	10,397	367,167
Hold 3	9,093	321,116
Hold 4	9,962	351,805
Hold 5	9,223	325,707
Total, holds and hatches	47,952	1,693,409



Midship Air Draft

(To Top of Hatch Coaming at Side)

	Metres	Feet
Summer (FW) (9.514 m)	6.476 m	21'- 3"
Seaway (FW) (8.077 m)	7.913 m	25'-11½"
Ballast (FW) (5.690 m)	10.300m	33'- 9½"

qu

Hatches

	Length	Width
Number: 17	15.84m	6.8m
Type: Single plate		
	Metres	Feet
Bow to mid Hatch #1	16.50 m	54'- 2"
Fwd to Aft	165.55 m	543'- 2"
Mid Hatch #15.84m to Stern	43.50 m	142'- 8"

63 Church Street Suite 600 St. Catharines, Ontario L2R
 3C4 Tel: 905.988.2600 Fax: 905.988.1801
www.algonet.com