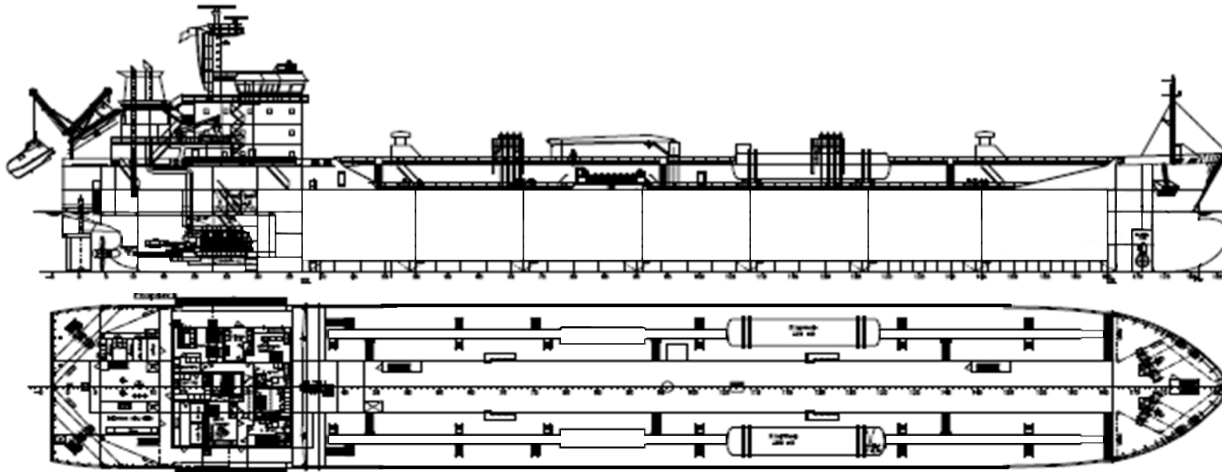
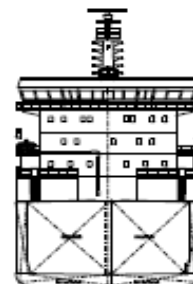




# Algocanada



**Manager:** Algoma Tankers Limited  
**Registry:** St Catharines / Canada  
**Builder:** Med Marine Kilavuzluk Ve Romorkaj Hizmetleri 2008  
**Type:** Double Hull Product Oil Tanker  
**Class:** Lloyds Register of Shipping  
 100A1 ESP, IMO II, Ice Class 1A, LMC, IGS, UMS  
**IMO Number:** 9378591



## Principal Particulars

|              | Metres | Feet     |
|--------------|--------|----------|
| LOA          | 129.85 | 426'-1"  |
| LBP          | 124.65 | 408'-11" |
| Beam (mld)   | 19.8   | 64'-11"  |
| Depth (mld)  | 9.95   | 32'- 08" |
| Keel to Mast | 32.8   | 107'-07" |

## Tonnage

|       |       |
|-------|-------|
| Gross | 8,009 |
| Net   | 3,609 |

## Cargo Pumps

14 FRAMO Cargo pumps at 335 m3/hr each

## Cargo Deadweight

|             |        |
|-------------|--------|
| Summer (SW) | 11,267 |
| Winter (SW) | 10,899 |

## Tank Capacities (at 98%)

|                              | m <sup>3</sup> | bbls          |
|------------------------------|----------------|---------------|
| Tank No. 1 P&S               | 1,490          | 9,372         |
| Tank No. 2 P&S               | 1,779          | 11,190        |
| Tank No. 3 P&S               | 1,845          | 11,605        |
| Tank No. 4 P&S               | 1,843          | 11,592        |
| Tank No. 5 P&S               | 1,844          | 11,598        |
| Tank No. 6 P&S               | 1,839          | 11,567        |
| Tank No. 7 P&S               | 1,633          | 10,271        |
| Slop Tank 1                  | 129            | 813           |
| Slop Tank 2                  | 118            | 742           |
| <b>Total (ex slop tanks)</b> | <b>12,273</b>  | <b>77,195</b> |

## Assigned Drafts

|             | Meters | Feet    |
|-------------|--------|---------|
| Summer (FW) | 7.780  | 25'-06" |
| Summer (SW) | 7.614  | 25'-00" |
| Winter (FW) | 7.622  | 25'-00" |
| Winter (SW) | 7.456  | 24'-06" |
| FWA         | 0.166  |         |

## Air Draft

|                      | Metres | Feet    |
|----------------------|--------|---------|
| Summer (SW)          | 25.186 | 82'-08" |
| Ballast (SW) (5.5 m) | 27.300 | 89'-07" |

## Service Speed

13 knots

## Tank Coatings

MarineLine Advanced Polymer

## Main Engine Type

MAK 9M32C

## Propeller

One Controllable Pitch

## Bow Thruster

500 kW

## Alternative Propulsion Device (APD)

1300 kW

63 Church Street Suite 600 St. Catharines, Ontario L2R  
 3C4 Tel: 905.988.2600 Fax: 905.988.1801  
[www.algonet.com](http://www.algonet.com)