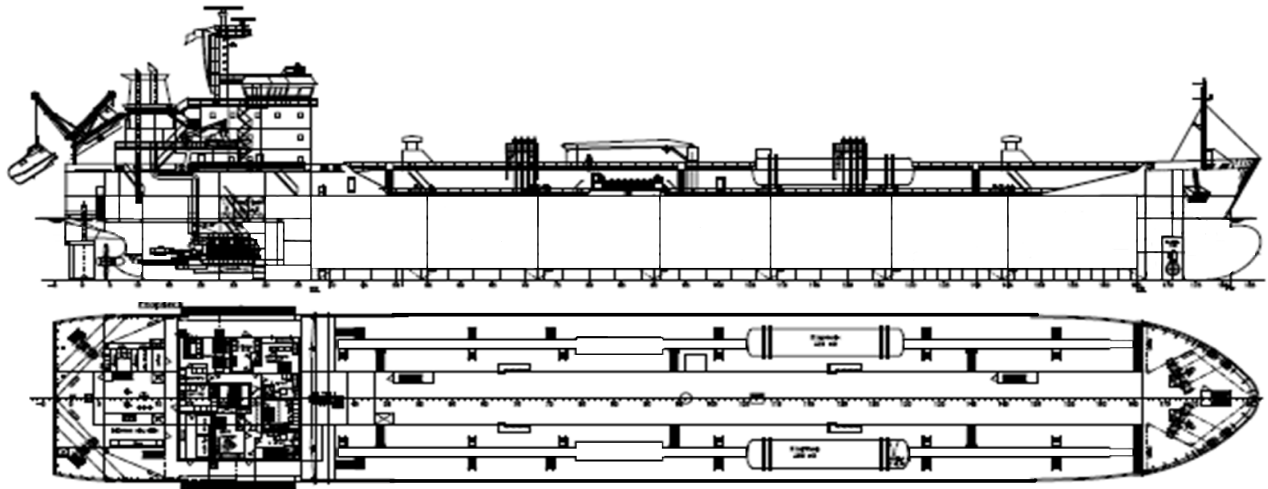
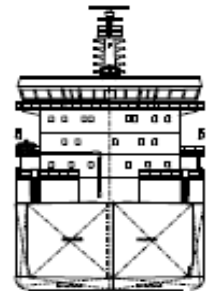




# Algocanada



**Manager:** Algoma Tankers Limited  
**Registry:** St Catharines / Canada  
**Builder:** Med Marine Kilavuzluk Ve Romorkaj Hizmetleri 2008  
**Type:** Double Hull, Type II Chemical / Product Oil Tanker  
**Class:** Lloyds Register of Shipping  
 100A1 ESP, IMO II, Ice Class 1A, LMC, IGS, UMS  
**IMO Number:** 9378591



## Principal Particulars

	Metres	Feet
LOA	129.85	426'-1"
LBP	124.65	408'-11"
Beam (mld)	19.8	64'-11"
Depth (mld)	9.95	32'- 08"
Keel to Mast	32.8	107'-07"

## Tonnage

Gross	8,009
Net	3,609

## Cargo Pumps

14 FRAMO Cargo pumps at 335 m3/hr each

## Cargo Deadweight

Summer (SW)	11,267
Winter (SW)	10,899

## Tank Capacities (at 98%)

	m <sup>3</sup>	bbls
Tank No. 1 P&S	1,490	9,372
Tank No. 2 P&S	1,779	11,190
Tank No. 3 P&S	1,845	11,605
Tank No. 4 P&S	1,843	11,592
Tank No. 5 P&S	1,844	11,598
Tank No. 6 P&S	1,839	11,567
Tank No. 7 P&S	1,633	10,271
Slop Tank 1	129	813
Slop Tank 2	118	742
Total (ex slop tanks)	12,273	77,195

## Assigned Drafts

	Meters	Feet
Summer (FW)	7.780	25'-06"
Summer (SW)	7.614	25'-00"
Winter (FW)	7.622	25'-00"
Winter (SW)	7.456	24'-06"
FWA	0.166	

## Air Draft

	Metres	Feet
Summer (FW)	17.24	76'-07"
Ballast (FW) (5.6 m)	19.42	83'-08"
Seaway Draft (FW)	25.02	82'-01"

## Service Speed

13 knots

## Tank Coatings

MarineLine Advanced Polymer

## Main Engine Type

MAK 9M32C

## Propeller

One Controllable Pitch

## Bow Thruster

500 kW

## Alternative Propulsion Device (APD)

1300 kW

Suite 600, 63 Church Street, St. Catharines, Ontario L2R  
 3C4 Tel: 905.687.7888 Fax: 905.687.7840  
[www.algonet.com](http://www.algonet.com)