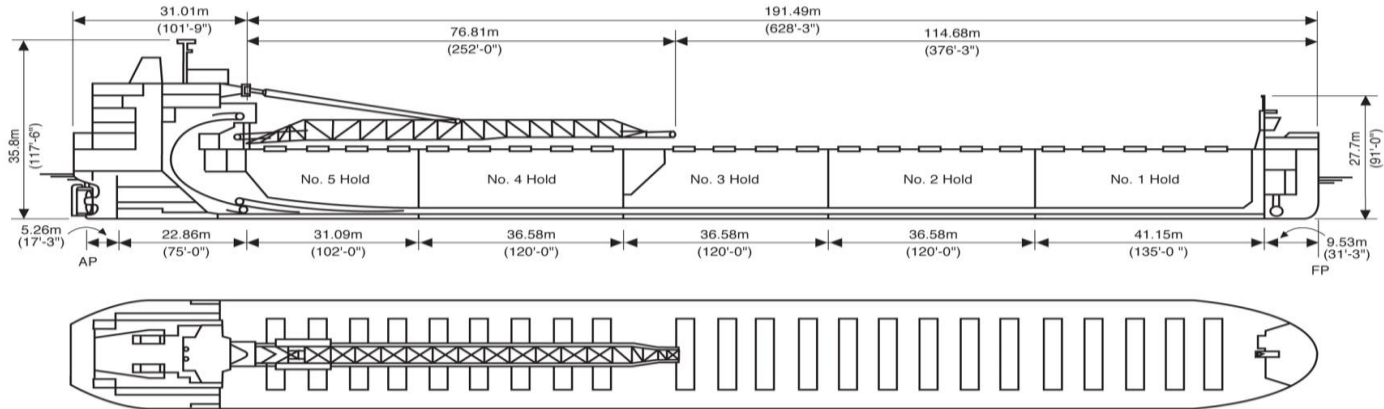
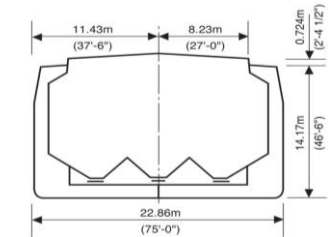




Algolake



Manager: Algoma Central Corporation
 Registry: Sault Ste. Marie / Canada
 Builder: Collingwood Shipyards, 1977, Hull 211
 Type: Great Lakes Self Unloading Bulk Carrier
 Class: Lloyds Register of Shipping
 ✕100A1 Great Lakes & River St Lawrence service ✕LMC



Principal Particulars

| | Metres | Feet |
|-------------|----------|----------|
| LOA | 222.50 m | 730'- 0" |
| LBP | 219.61 m | 720'- 6" |
| Beam (mld) | 22.86 m | 75'- 0" |
| Depth (mld) | 14.17 m | 46'- 6" |

Tonnage

| | Cdn | US |
|-------|--------|--------|
| Gross | 22,852 | 20,730 |
| Net | 16,621 | |

Assigned Drafts

| | Metres | Feet |
|-------------------|--------|--|
| Mid Summer (FW) | 9.154 | 30' - 0 ³ / ₈ " |
| Mid Summer (SW) | 8.970 | 29' - 5 ¹ / ₈ " |
| Summer (FW) | 8.932 | 29' - 3 ⁵ / ₈ " |
| Summer (SW) | 8.748 | 28' - 8 ³ / ₈ " |
| Intermediate (FW) | 8.830 | 28' - 11 ⁵ / ₈ " |
| Intermediate (SW) | 8.646 | 28' - 4 ³ / ₈ " |
| Winter (FW) | 8.729 | 28' - 7 ⁵ / ₈ " |
| Winter (SW) | 8.545 | 28' - 0 ³ / ₈ " |

Self Unloading Equipment

Three belt gravity system with loop belt elevator. 76.81 m discharge boom luffing to 18° and slewing to 90° P&S. Bulk flow gates, UHMW plastic linings in holds and vibrators throughout tunnels. Designed discharge rate of up to 5,440 metric tons/hour.

Cargo Deadweight

(610 MT consumables assumed)

| | Metric | Long |
|--------------------------|--------|--------|
| MS (FW) | 33,334 | 32,807 |
| 26'-6" (FW) Seaway Draft | 28,042 | 27,599 |

Note: Deadweight shown **excludes** Crew & Effects, Fuel Oil, Lube Oil, Water & Stores (~610 MT).

Midship Air Draft

(To Top of Hatch Coaming at Side)

| | Metres | Feet |
|------------------------|--------|--|
| Summer (FW) (8.932 m) | 5.747 | 18' - 10 ¹ / ₄ " |
| Seaway (FW) (8.077m) | 6.603 | 21' - 8" |
| Ballast (FW) (5.680 m) | 9.000 | 29' - 6 ¹ / ₂ " |

Hold Capacities

| | m ³ | ft ³ |
|--------------------------|----------------|-----------------|
| Hold 1 | 8,764 | 309,497 |
| Hold 2 | 8,165 | 288,344 |
| Hold 3 | 7,084 | 250,169 |
| Hold 4 | 8,165 | 288,344 |
| Hold 5 | 6,351 | 224,283 |
| Total, holds and hatches | 38,529 | 1,360,637 |

Hatches

| | | |
|------------------------|---------------|-------------|
| Number: | 23 | |
| Type: | Single plate | |
| | Metres | Feet |
| Bow to mid Hatch #1 | 17.68 | 58.00 |
| Fwd to Aft | 168.25 | 552.00 |
| Mid Hatch #23 to Stern | 36.58 | 120.00 |

63 Church Street Suite 600 St. Catharines, Ontario L2R
 3C4 Tel: 905.988.2600 Fax: 905.988.1801
www.algonet.com