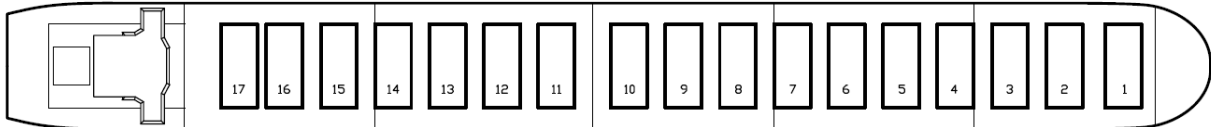
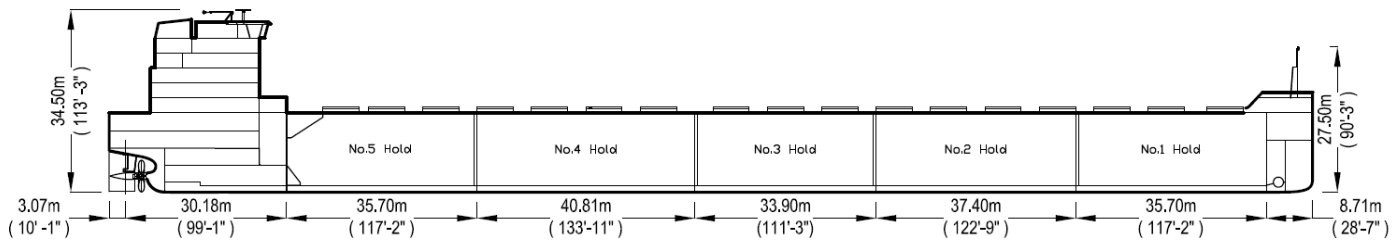




# Algoma Strongfield



Manager: Algoma Central Corporation  
 Registry: St. Catharines / Canada  
 Builder: Nantong Mingde Heavy Industries  
 Type: Great Lakes Bulk Carrier  
 Class: Lloyds Register of Shipping  
 ✕100A1 Great Lakes & River St Lawrence

## Principal Particulars

	Metres	Feet
LOA	225.55 m	740'-0"
LBP	222.06 m	728'-6½"
Beam (mld)	23.770 m	78'-0"
Depth (mld)	14.700 m	48'-3"

## Tonnage

	International
Gross	24451
Net	10370

## Great Lakes Load Lines

	Metres	Feet
MS (FW)	9.748	32'- 0⅞"
S (FW)	9.511	31'- 2¾"
INT (FW)	9.403	30'- 10½"
W (FW)	9.294	30'- 6¼"
MS (SW)	9.531	31'- 3½"
S (SW)	9.294	30'- 6¼"
INT (SW)	9.186	30'- 2"
W (SW)	9.077	29'- 9¼"

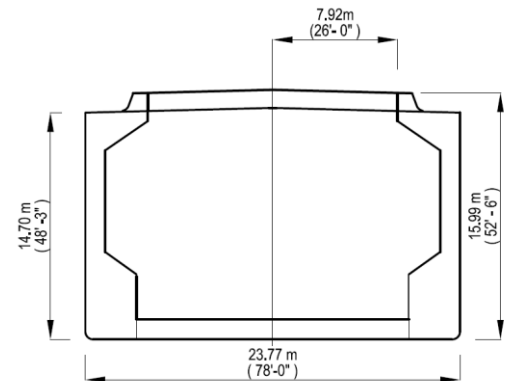
## Cargo Deadweight

(610 MT consumables assumed)	Metric	Long
@ Mid Summer (FW)	38,524	37,917
@ 26'- 6" (FW) Seaway Draft	29,849	29,379

Note: Deadweight shown excludes Crew & Effects, Fuel Oil, Lube Oil, Water & Stores (~610 MT).

## Hold Capacities (NET)

	m <sup>3</sup>	ft <sup>3</sup>
Hold 1	9,253	326,763
Hold 2	10,397	367,152
Hold 3	9,093	321,123
Hold 4	9,962	351,815
Hold 5	8,960	316,402
<b>Total, holds and hatches</b>	<b>47,665</b>	<b>1,683,256</b>



## Midship Air Draft

(To Top of Hatch Coaming at Side)

	Metres	Feet
Summer (FW) (9.511 m)	6.479	21'- 3"
Seaway (FW) (8.077 m)	7.913 m	25'-11½"
Ballast (FW) (5.690 m)	10.300m	33'- 9½"

## Hatches

Number: 17  
Type: Single plate

	Metres	Feet
Bow to mid Hatch #1	16.50 m	54'- 2"
Fwd to Aft	165.55 m	543'- 2"
Mid Hatch #15.84m to Stern	43.50 m	142'- 8"

63 Church Street Suite 600 St. Catharines, Ontario L2R  
 3C4 Tel: 905.988.2600 Fax: 905.988.1801  
[www.algonet.com](http://www.algonet.com)