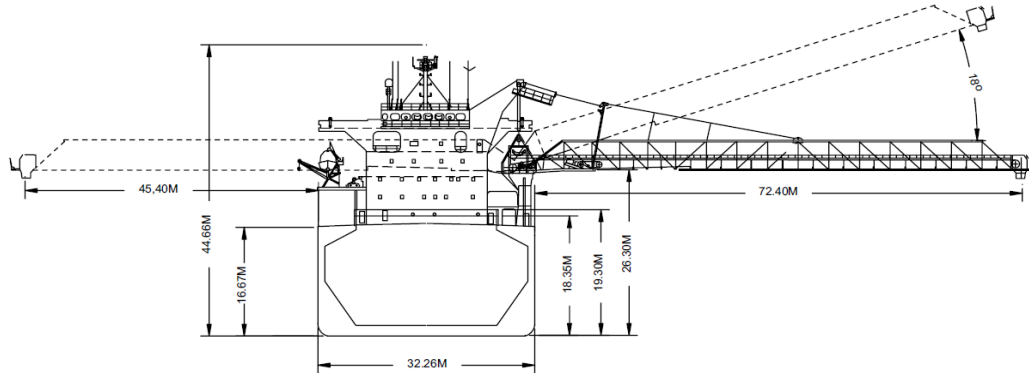
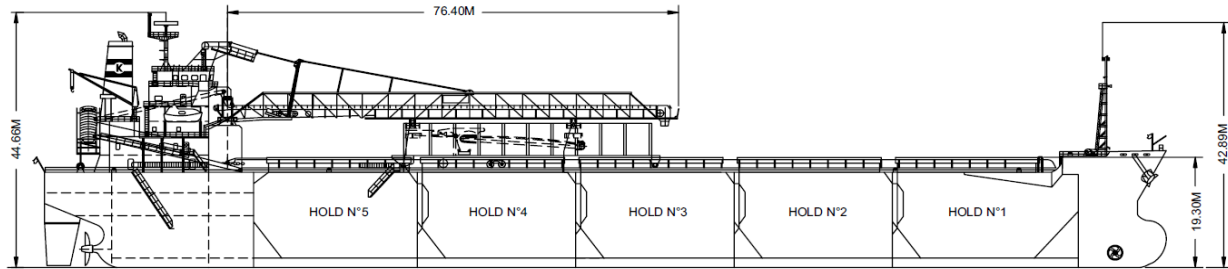




Venture



Manager: V.Ships
 Built: 2002
 Registry: Marshall Islands
 Type: Self Unloading Bulk Carrier
 Class: DNV \approx 1A1

Principal Particulars

	Metres	Feet
LOA	189.99	623' 3.92"
Beam (mld)	32.26	105' 10.08"
Depth (mld)	16.67	54' 8.30"

Assigned Drafts

	Metres	Feet
Tropical (SW)	11.970	39' 3.26"
Tropical (FW)	12.240	40' 1.89"
S (SW)	11.720	38' 5.42"
F	11.990	39' 4.05"
W (SW)	11.480	37' 7.97"

Tonnage

Gross	30,739
Net	14,515

Self Unloading Equipment

Top reclaiming continuous unloading unit (BR-unit). 76.4 m discharge boom luffing to 18° and slewing to 140° Port & 90° Starboard. Designed discharge rate of up to 1,875 metric tons/hour.

Cargo Deadweight

(610 MT consumables assumed)

	Metric	Long
@ 11.72 m (SW)	48,184	47,423

Note: Deadweight shown excludes Crew & Effects, Fuel Oil, Lube Oil, Water & Stores (~610 MT).

Hold Capacities

	m ³	ft ³
Hold 1	10,485	370,225
Hold 2	10,550	372,521
Hold 3	10,549	372,485
Hold 4	10,539	372,132
Hold 5	10,606	374,498
Total, holds and hatches	52,729	1,861,861

Hatches

Number:	5
Type:	1 Folding, Hydraulic 4 End Rolling, Hydraulic