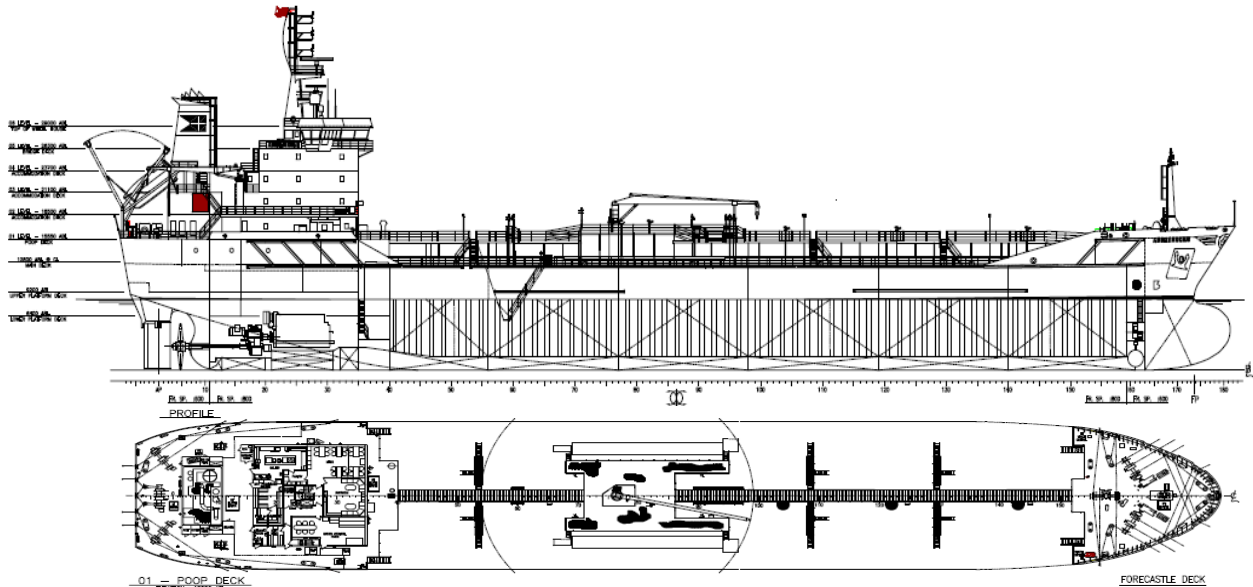
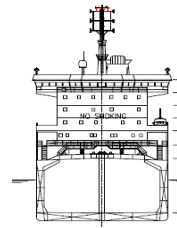




# Algoma Hansa



**Manager:** Algoma Tankers Limited  
**Registry:** St Catharines / Canada  
**Builder:** Alabama Shipyard 1998  
**Type:** IMO II Double Hull Oil & Chemical Tanker  
**Class:** Lloyds Register of Shipping  
 ✕100A1, SG 1.54, Ice Class 1C, ESP, LI, ✕LMC, UMS, NAV1, SCM  
**IMO Number:** 9127198



## Principal Particulars

	Metres	Feet
LOA	144.05	472'-07"
LBP	134.00	439'-07"
Beam (mld)	23.30	76'-05"
Depth (mld)	12.40	40'-08"
Keel to Mast	39.97	131'-01"

## Tonnage

Gross	11,290
Net	4,891

## Cargo Pumps

12 FRAMO Cargo Pumps At 300 m3/hr each

## Cargo Deadweight

Summer (SW)	16,775
Winter (SW)	16,267

## Tank Capacities (at 98%)

Tank No. 1 P&S	2,123	13351
Tank No. 2 P&S	3,371	21206
Tank No. 3 P&S	3,524	22163
Tank No. 4 P&S	3,521	22149
Tank No. 5 P&S	3,515	22,107
Tank No. 6 P&S	2,483	15,616

7S Slop Tank	223	1,403
7P Slop Tank	223	1,400

Total (ex slop tanks)	18,537	116,593
-----------------------	--------	---------

## Assigned Drafts

	Metres	Feet
Summer (FW)	8.894	29'-02"
Summer (SW)	8.700	28'-07"
Winter (FW)	8.713	28'-07"
Winter (SW)	8.519	27'-11"
FWA	0.194	

## Air Draft

	Metres	Feet
Summer (SW)	31.270	102'-07"
Ballast (SW) (6.5 m)	33.470	109'-10"

## Service Speed

12.5 knots

## Tank Coatings

Epoxy Phenolic Coated

## Main Engine Type

Wartsila 6L46A

## Propeller

One Controllable Pitch

## Bow Thruster

588 kW

## Alternative Propulsion Device (APD)

900 kW

63 Church Street Suite 600 St. Catharines, Ontario L2R  
 3C4 Tel: 905.988.2600 Fax: 905.988.1801  
[www.algonet.com](http://www.algonet.com)