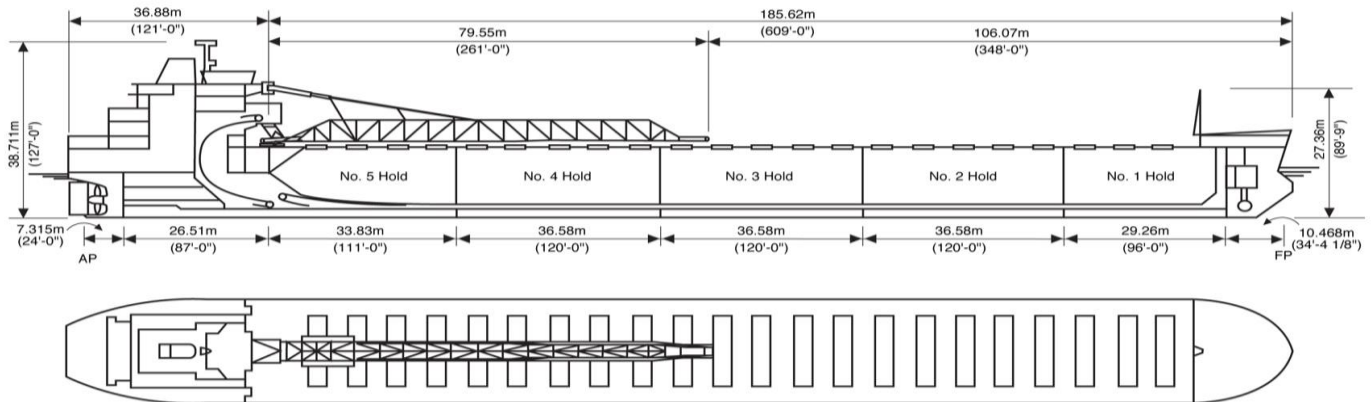
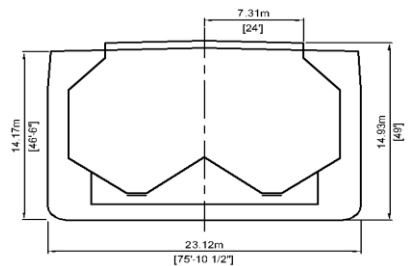




Algowood



Manager: Algoma Central Corporation
 Registry: Sault Ste. Marie / Canada
 Builder: Collingwood Shipyards, 1981, Hull 219
 Type: Great Lakes Self Unloading Bulk Carrier
 Class: Lloyds Register of Shipping
 ✕100A1 Great Lakes & River St Lawrence service ✕LMC



Principal Particulars

	Metres	Feet
LOA	225.55 m	740'-0"
LBP	220.17 m	722'-4"
Beam (mld)	23.13 m	75'-10½"
Depth (mld)	14.17 m	46'- 6"

Tonnage

	Cdn	US
Gross	22,021	19,061
Net	15,373	

Assigned Drafts

	Metres	Feet
Mid Summer (FW)	9.149	30' - 0"
Mid Summer (SW)	8.940	29' - 3¾"
Summer (FW)	8.926	29' - 3¼"
Summer (SW)	8.717	28' - 7"
Intermediate (FW)	8.823	28' - 11½"
Intermediate (SW)	8.614	28' - 2⅞"
Winter (FW)	8.720	28' - 7⅛"
Winter (SW)	8.511	27' - 10⅞"

Self Unloading Equipment

Three belt gravity system with loop belt elevator. 79.25 m discharge boom luffing to 18° and slewing to 90° P&S. UHMW plastic linings in holds and vibrators throughout tunnels. Designed discharge rate of up to 5,440 metric tons/hour.

Cargo Deadweight

(610 Tonnes consumables assumed)

	Metric	Long
MS (FW)	32,771	32,253
26'-6" (FW) Seaway Draft	27,715	27,277

Note: Deadweight shown **excludes** Crew & Effects, Fuel Oil, Lube Oil, Water & Stores (~600 MT).

Midship Air Draft

(To Top of Hatch Coaming at Side)

	Metres	Feet
Summer (FW) (8.926 m)	5.894	19' - 4"
Seaway (FW) (8.077m)	6.742	22' - 1¼"
Ballast (FW) (5.680 m)	9.139	29' - 11⅝"

Hold Capacities

	m ³	ft ³
Hold 1	5,541	195,678
Hold 2	7,545	266,449
Hold 3	7,545	266,449
Hold 4	7,545	266,449
Hold 5	5,975	211,005
Total, holds and hatches	34,151	1,206,030

Hatches

Number: 22
Type: Single plate

	Metres	Feet
Bow to mid Hatch #1	23.77	78.00
Fwd to Aft	156.67	514.00
Mid Hatch #22 to Stern	45.11	148.00

63 Church Street Suite 600 St. Catharines, Ontario L2R
 3C4 Tel: 905.988.2600 Fax: 905.988.1801
www.algonet.com