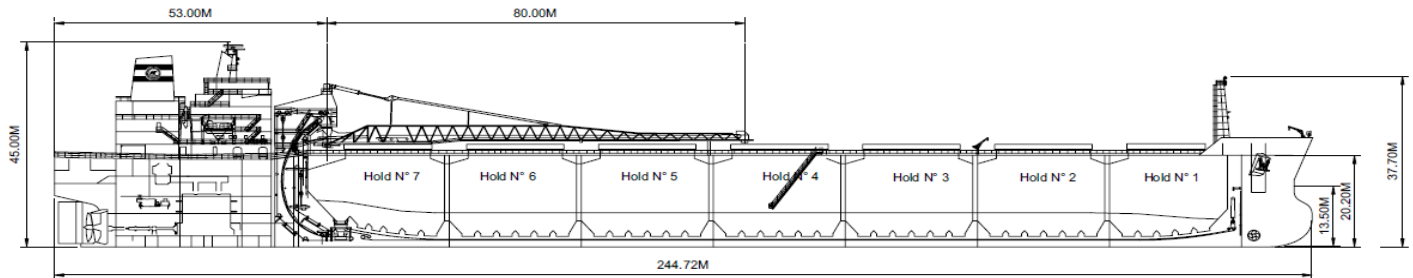




# Hon. Henry Jackman



Manager: Algoma Ship Tech  
 Registry: Vanuatu  
 Builder: New forebody 2007, Chengxi shipyard  
 Type: Self Unloading Bulk Carrier  
 Class: Lloyd's Register of Shipping ✕100 A1  
 ESP Shipright (SDA,FDA,CM) ESP, LI,LMC,UMS

## Principal Particulars

	Metres	Feet
LOA	244.72	802' 10.5"
LBP	236	774' 3.25"
Beam (mld)	32.22	105' 8.5"
Depth (mld)	20.2	66' 3.25"

## Assigned Drafts

	Metres	Feet
Tropical (SW)	13.780	45' 2.5"
Tropical (FW)	14.100	46' 3"
S (SW)	13.500	44' 3.5"
F	13.810	45' 3.75"
W (SW)	13.220	43' 4.5"

## Tonnage

Gross	46,191
Net	17,218

## Self Unloading Equipment

Two belt gravity system with loop belt elevator. 80.0 m discharge boom luffing to 18° and slewing to 90° P&S. Designed discharge rate of up to 5,000 metric tons/hour.

## Cargo Deadweight

(610 MT consumables assumed)

	Metric	Long
@ 13.5 m (SW)	75,597	74,403

Note: Deadweight shown excludes Crew & Effects, Fuel Oil, Lube Oil, Water & Stores (~610 MT).

## Midship Air Draft

(To Top of Hatch Coaming at Side)

	Metres	Feet
Summer (SW) (13.50 m)	8.00	26' 3"
Ballast (SW) (5.90 m)	15.60	51' 2.25"

## Hold Capacities

	m <sup>3</sup>	ft <sup>3</sup>
Hold 1	9,039	319,160
Hold 2	11,192	395,186
Hold 3	11,196	395,324
Hold 4	11,196	395,324
Hold 5	11,196	395,324
Hold 6	11,196	395,324
Hold 7	10,229	361,179
Total, holds and hatches	75,243	2,656,820

## Hatches

Number:	7
Type:	Side Rolling Panels