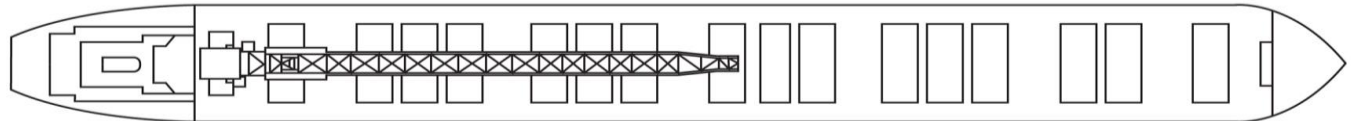
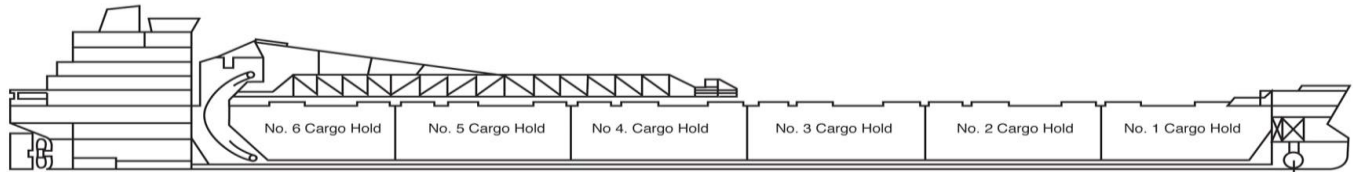




# Captain H. Jackman



Manager: Algoma Central Corporation  
 Registry: Sault Ste. Marie / Canada  
 Builder: Collingwood Shipyards, 1981, Hull 223  
 Type: Great Lakes Self Unloading Bulk Carrier  
 Class: Lloyds Register of Shipping  
 ✕100A1 Great Lakes & River St Lawrence service ✕LMC

## Principal Particulars

	Metres	Feet
LOA	222.50 m	730'- 0"
LBP	212.27 m	696'- 5"
Beam (mld)	23.12 m	75'-10¼"
Depth (mld)	12.80 m	42'- 0"

## Tonnage

	Cdn	US
Gross	19,643	17,820
Net	6,430	

## Assigned Drafts

	Metres	Feet
Mid Summer (FW)	8.864	29' - 1"
Mid Summer (SW)	8.660	28' - 5"
Summer (FW)	8.648	28' - 4½"
Summer (SW)	8.444	27' - 8½"
Intermediate (FW)	8.547	28' - 0½"
Intermediate (SW)	8.343	27' - 4½"
Winter (FW)	8.445	27' - 8½"
Winter (SW)	8.241	27' - 0½"

## Self Unloading Equipment

Single belt gravity system with single loop belt. 79.25 m discharge boom luffing to 18° and slewing to 90° P&S. Mass flow basket type unloading gates, UHMW plastic linings in holds and vibrators throughout tunnels. Designed discharge rate of up to 5,440 metric tons/hour. Variable speed belt.

## Cargo Deadweight

(610 MT consumables assumed)

	Metric	Long
MS (FW)	30,924	30,435
26'-6" (FW) Seaway Draft	27,260	26,829

Note: Deadweight shown excludes Crew & Effects, Fuel Oil, Lube Oil, Water & Stores (~610 MT).

## Midship Air Draft

(To Top of Hatch Coaming at Side)

	Metres	Feet
Summer (FW) (8.648 m)	5.085 m	16' - 8¼"
Seaway (FW) (8.077m)	5.656 m	18' - 6⅝"
Ballast (FW) (5.680 m)	8.053 m	26' - 5"

## Hold Capacities

	m <sup>3</sup>	ft <sup>3</sup>
Hold 1	4,283	151,252
Hold 2	4,538	160,257
Hold 3	4,523	159,728
Hold 4	4,538	160,257
Hold 5	4,540	160,328
Hold 6	4,241	149,769
Total, holds and hatches	26,663	941,591

## Hatches

Number: 17  
Type: Single plate

	Metres	Feet
Bow to mid Hatch #1	22.71	74.50
Fwd to Aft	153.62	504.00
Mid Hatch #17 to Stern	46.18	151.50

63 Church Street Suite 600 St. Catharines, Ontario L2R  
 3C4 Tel: 905.988.2600 Fax: 905.988.1801  
[www.algonet.com](http://www.algonet.com)